



@ Ericsls



OWNERSHIP OF **LEARNING**



Current date is Tue 1-01-1980

Enter new date (mm-dd-yy):13-11-2019

Current time is 0:11:08:87

Enter new Time 11:58:18

The IBM Personal Computer DOS

Version 1.00 (C)Copyright International Business Machines Corp 1981, 1986

(C)Copyright Microsoft Corp 1981, 1986

A>

A> Remember this?

—

```
fcomplex c; // ... return c;
float w;
if ((z.r == 0.0) && (z.i == 0.0))
    c.r=0.0;
    c.i=0.0;
} else {
    w = sqrt(sqrt(z.r*z.r + z.i*z.i));
    if (z.r > 0.0)
        c.r=w;
        c.i=z.i/z.r;
    } else {
        c.i=z.i/w;
        c.r=z.i/z.i*w;
    }
}
```



Technology driven change?

—

*Educating for unknown
future challenges!*



*We need **responsive** professionals!*



- *Adaptive and resilient*
- *Innovative*
- *Responsible*

*Can we educate for **tomorrow** with
yesterday's educational systems?*

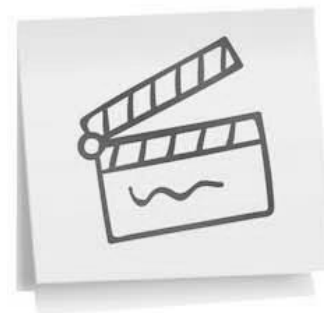


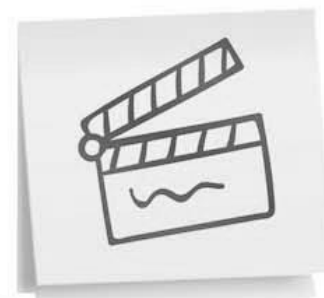
i





Information is 'free'













Anything will be used for learning!





SELF LEARNING
CAPABILITIES

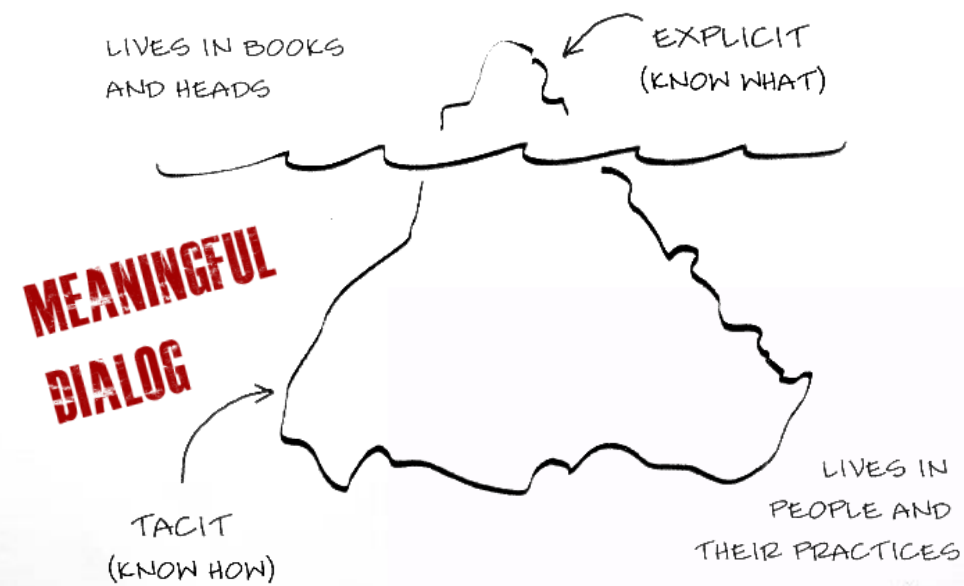


i





KNOWLEDGE AS ICEBERG



personal







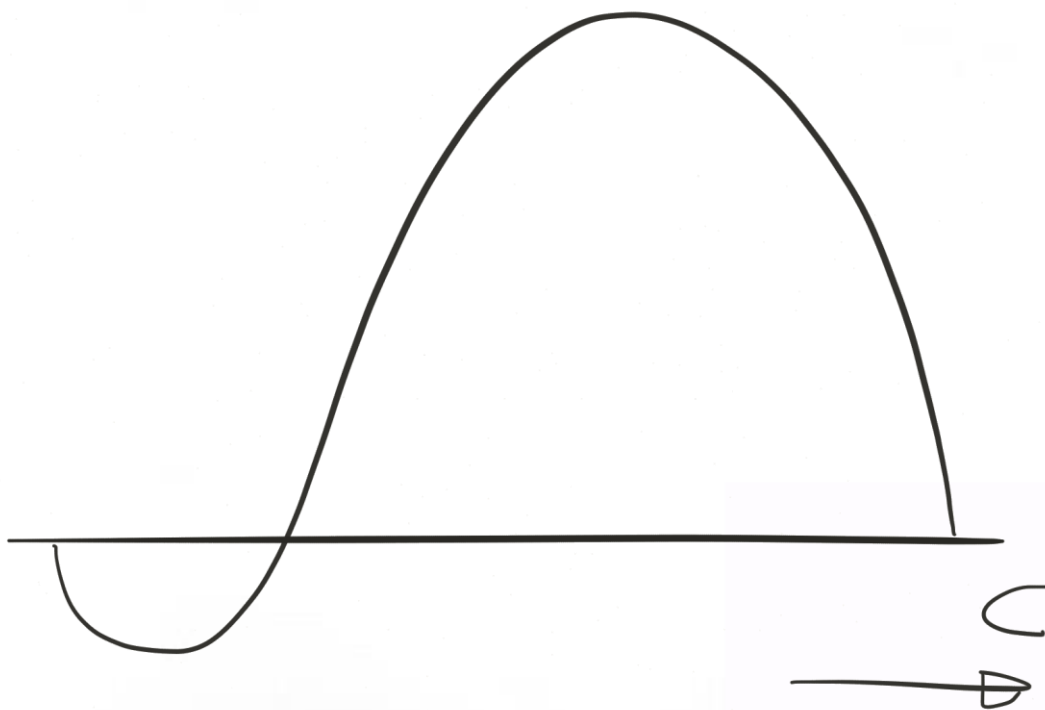
Talent development ?



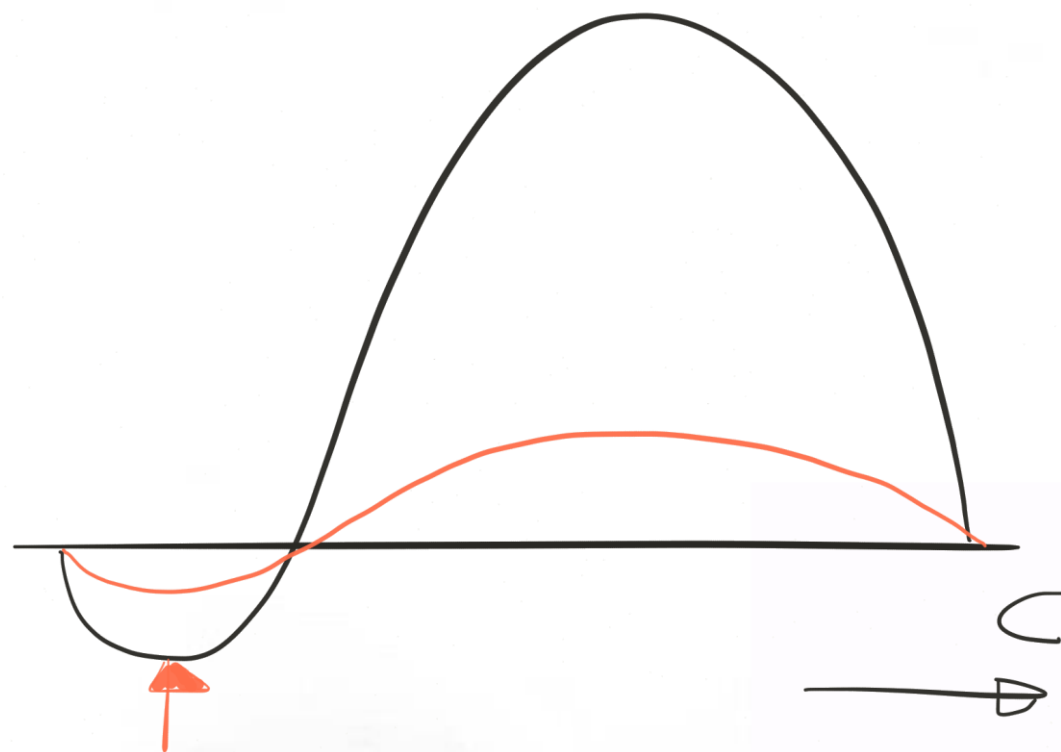
i

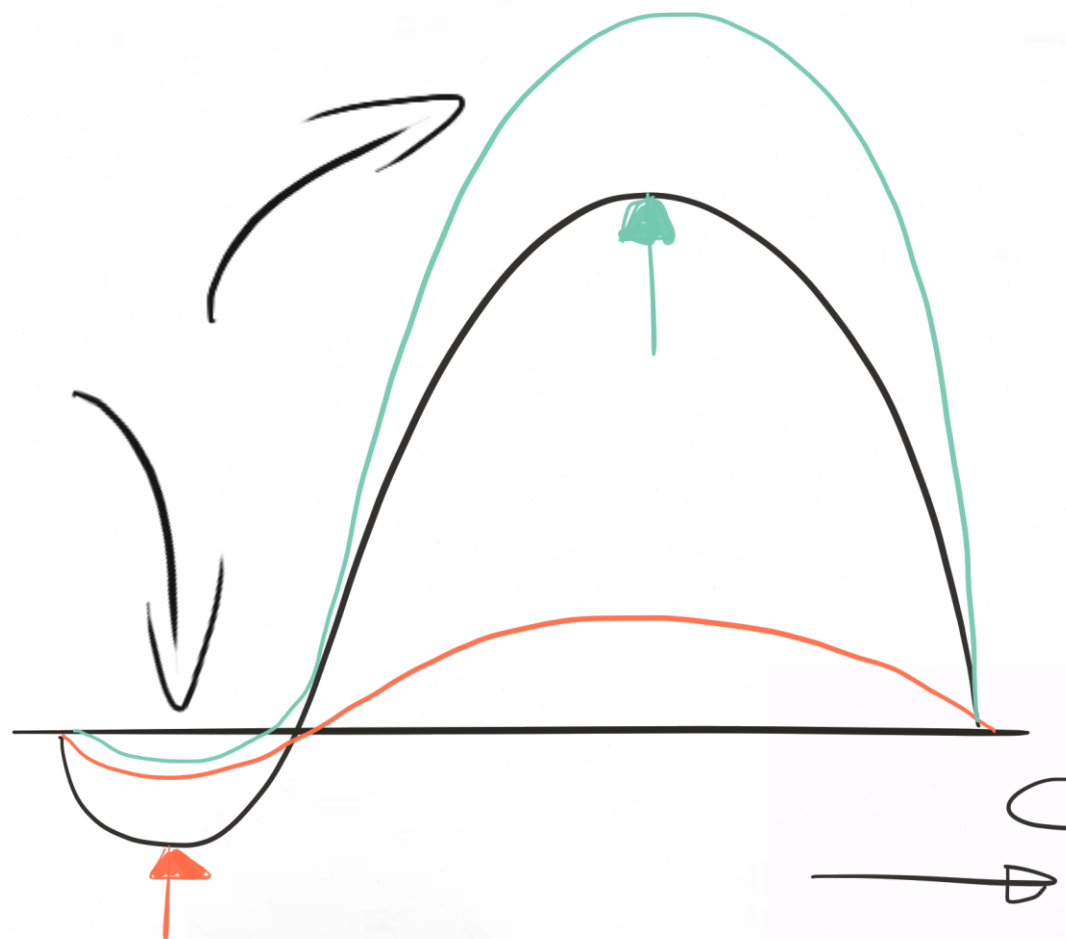
U
D

i



i





Strength - competence-based talent development



*Exploring the **how***

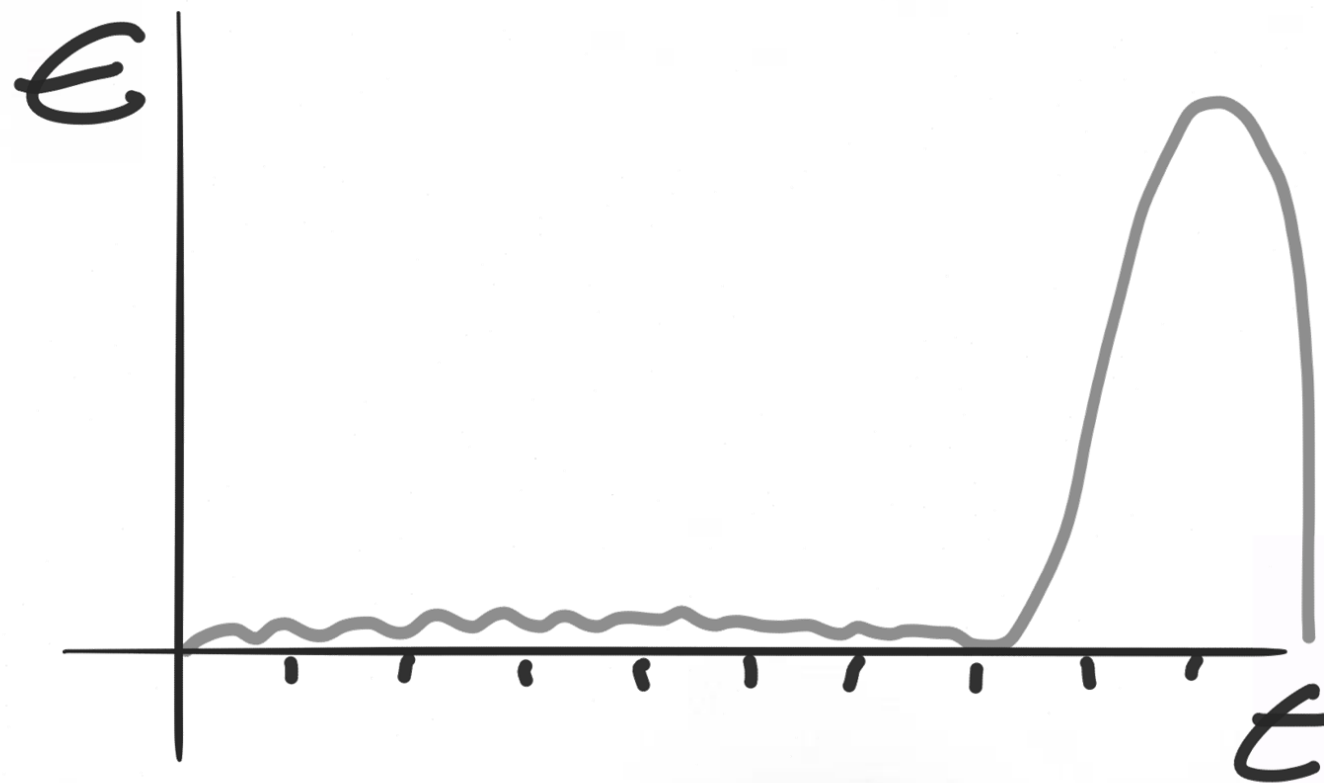


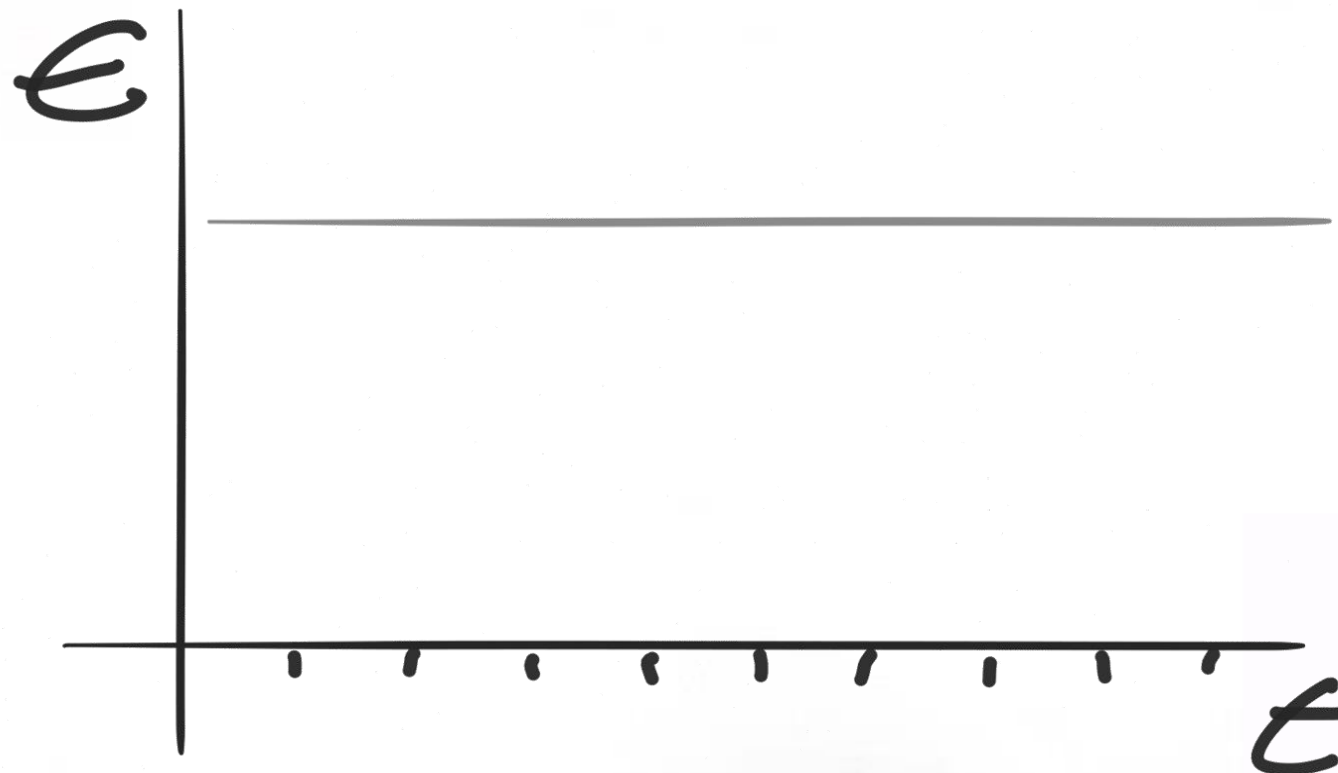
i

€

€

i



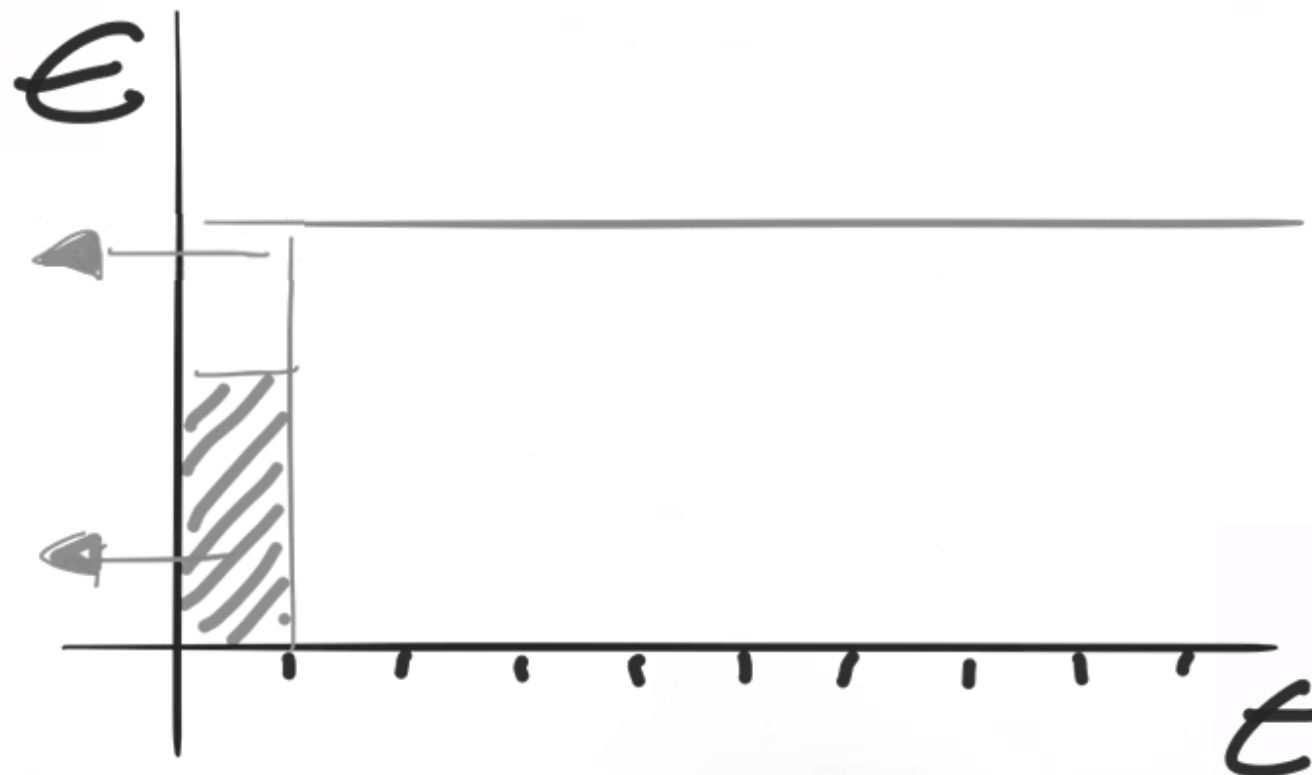


- *Inspire*
- *Structure*



Plan

Inspire





Assessments



*control **how** and **what**
students learn (and plan)*



Fontys
HOGESCHOOL ICT



Assessments

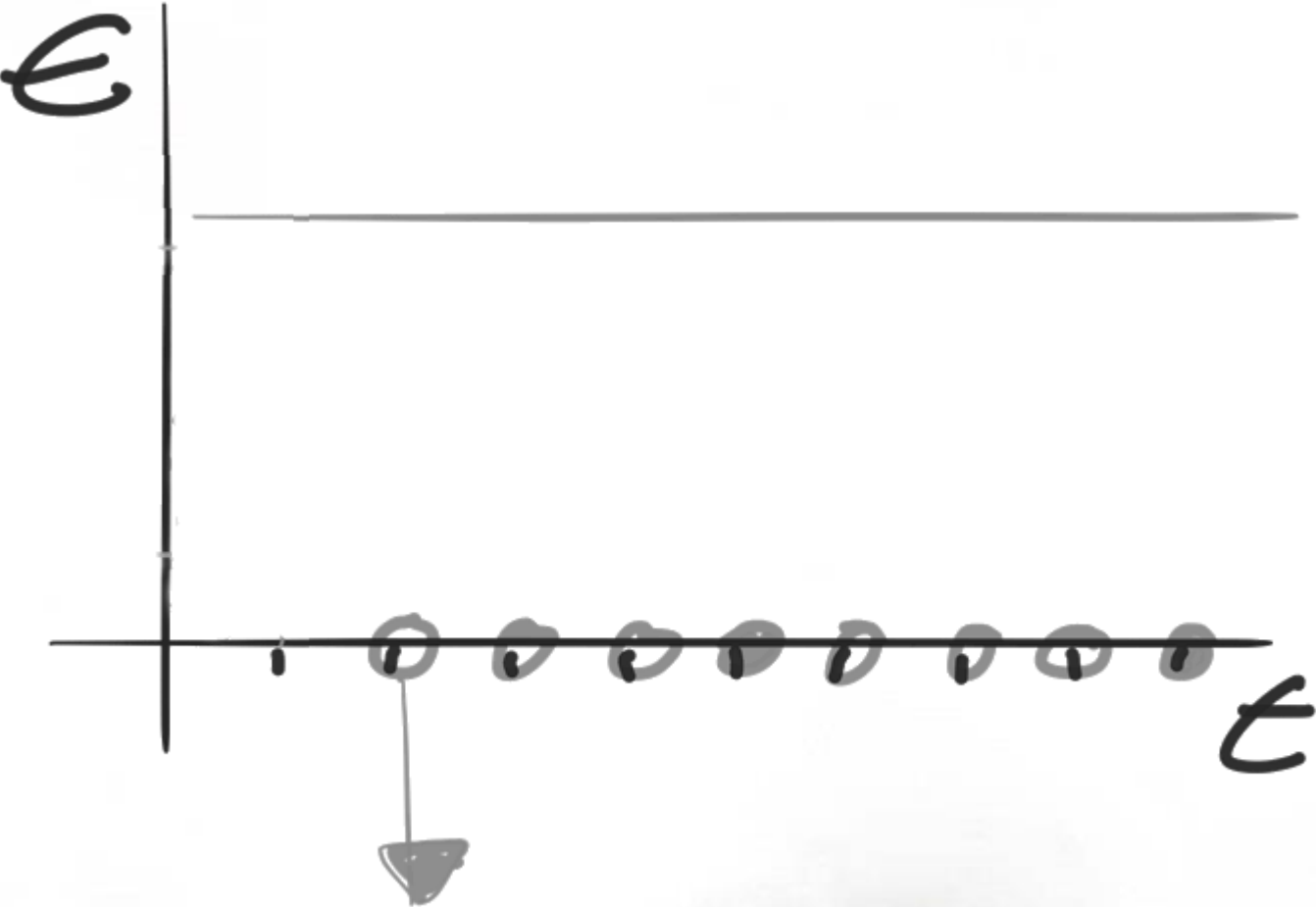


Meaningful
Part of the experience
Precise





Assessment as learning

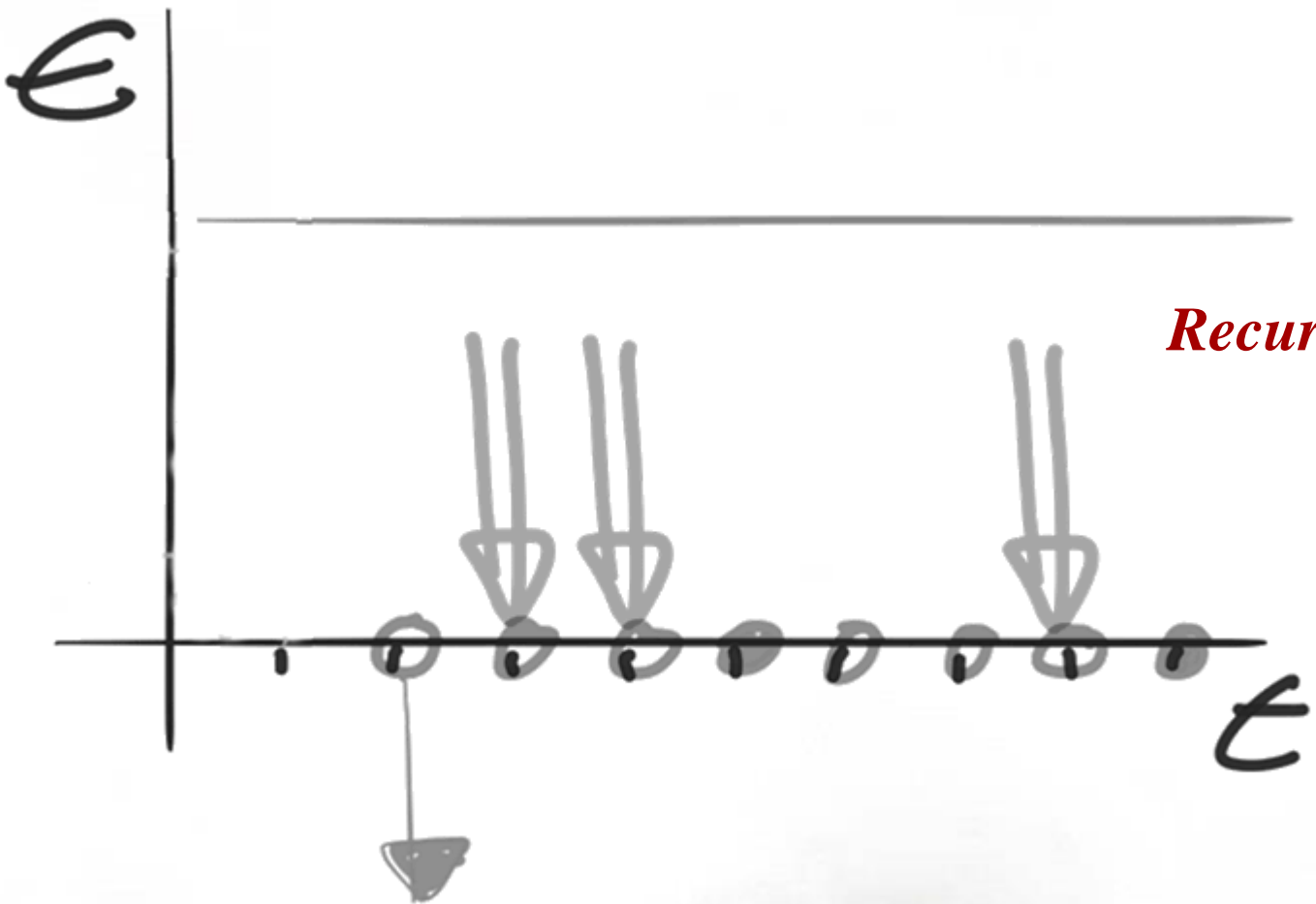


Student recorded *feedback*





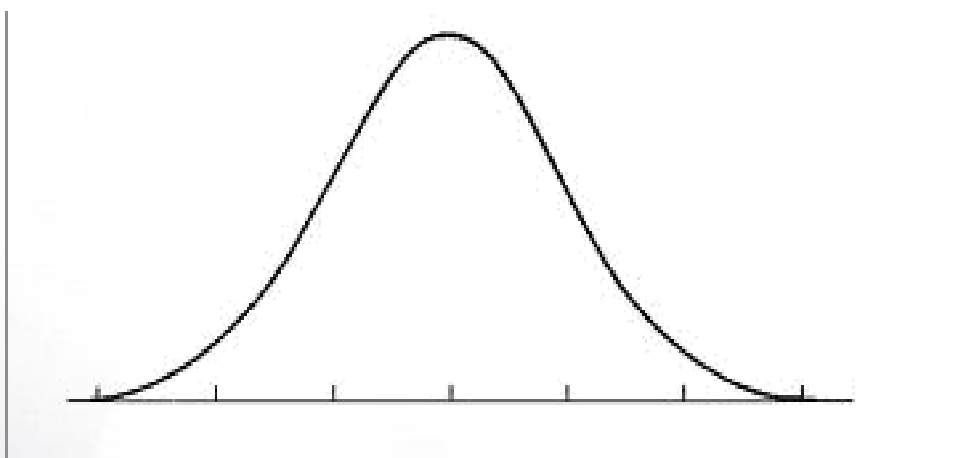
Assessment as learning



Recurring assignments

Student recorded feedback





- *Meaningful*
- *Part of the **experience***
- *Precise*





How?



How



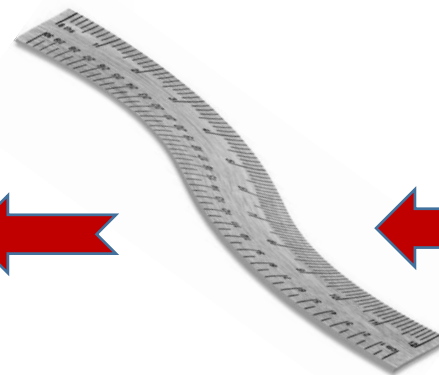
Stakeholder



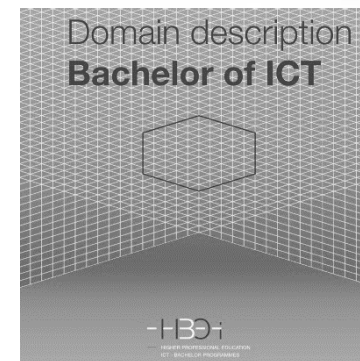
Challenge



Assignments



Criteria



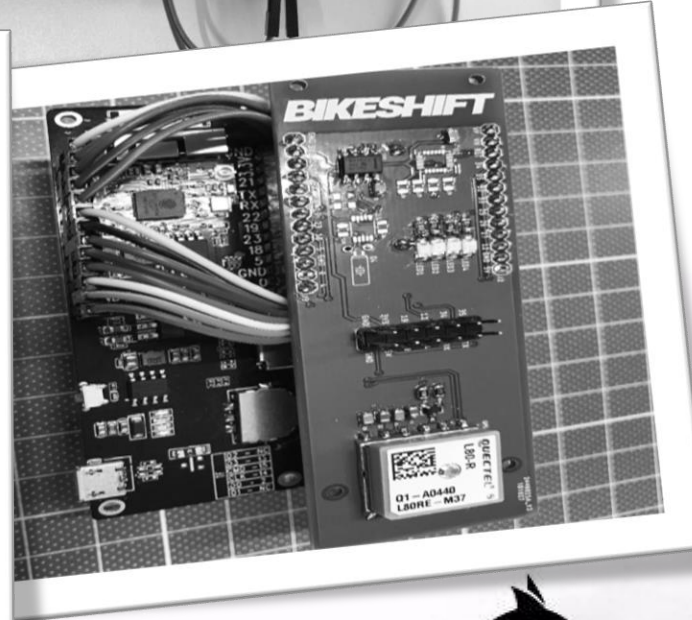
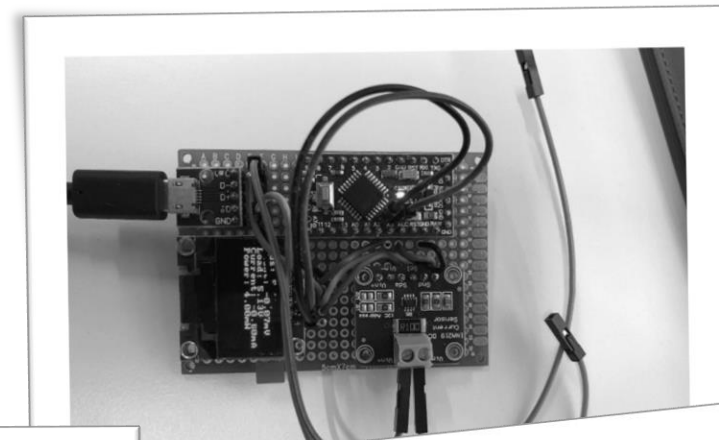
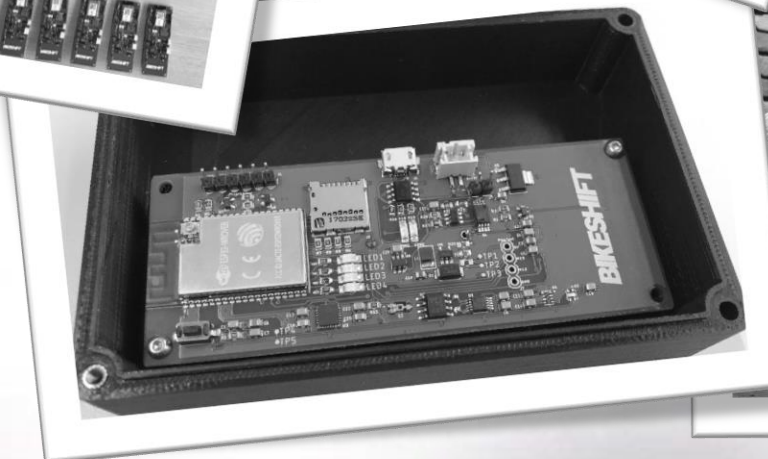
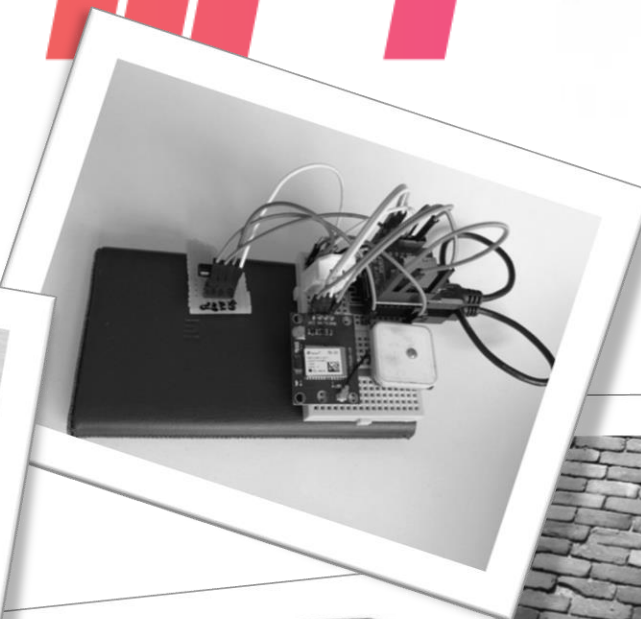
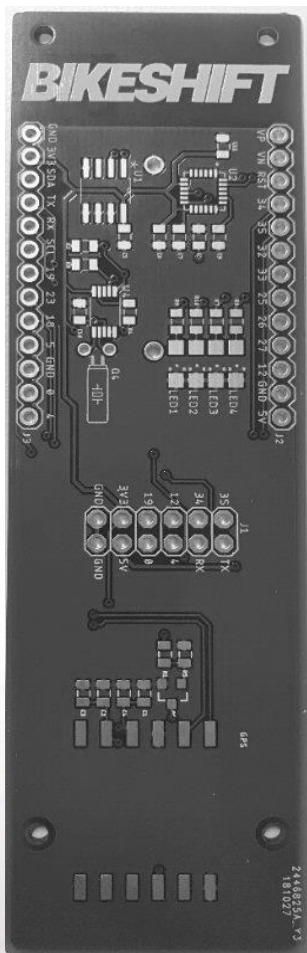
KPI's



*Partners in **education***

i

BIKESHIFT



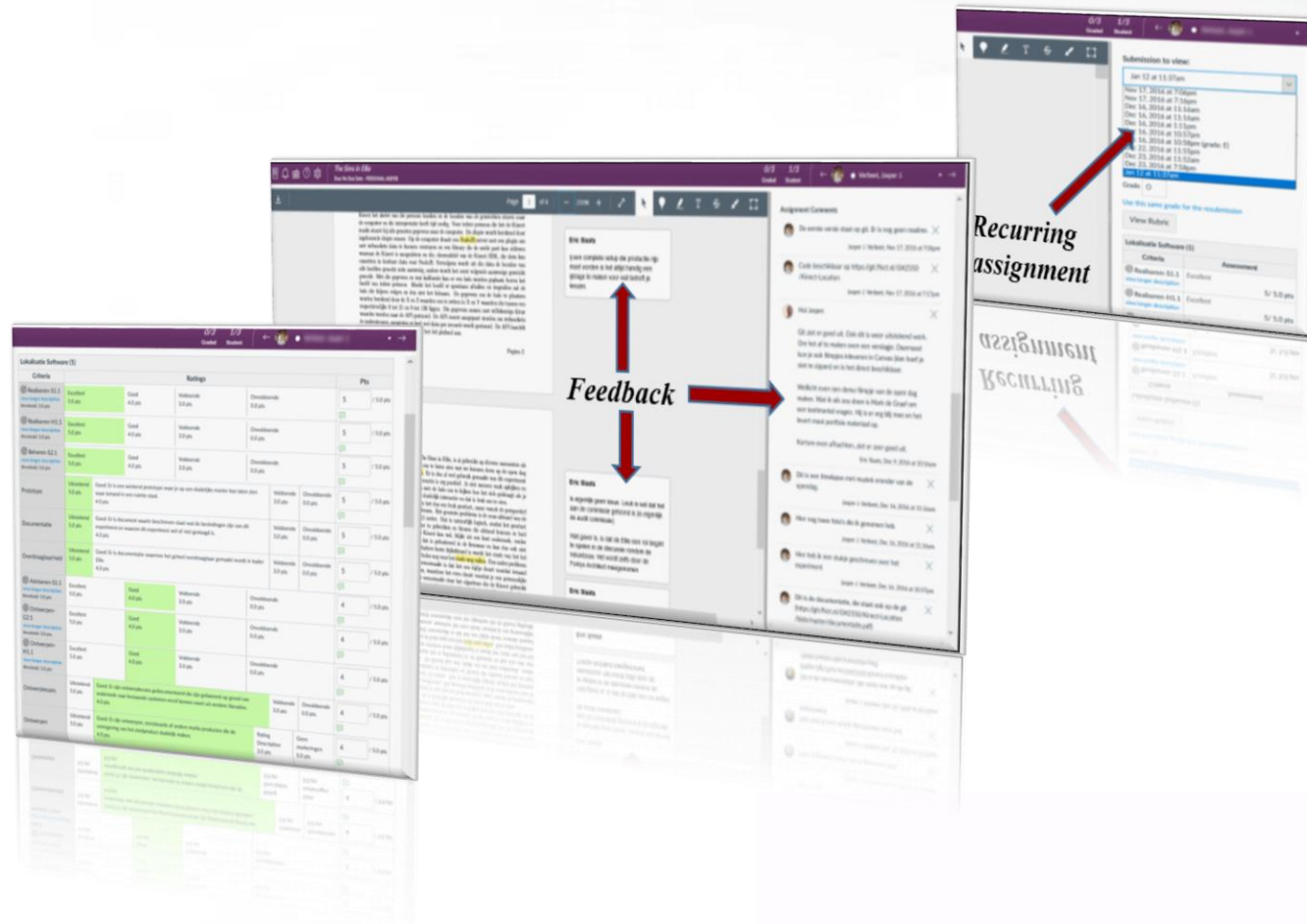


Personal validated portfolio

**STUDENT
OWNERSHIP**

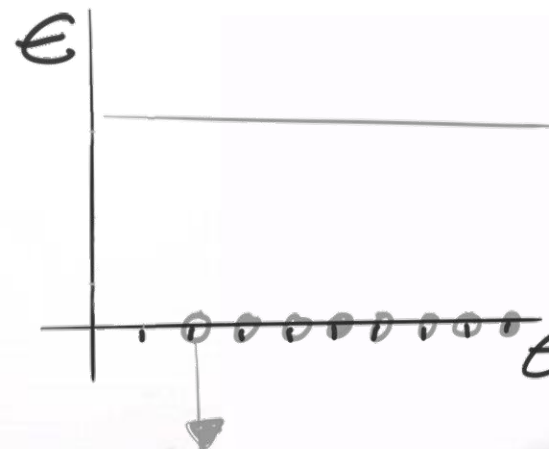


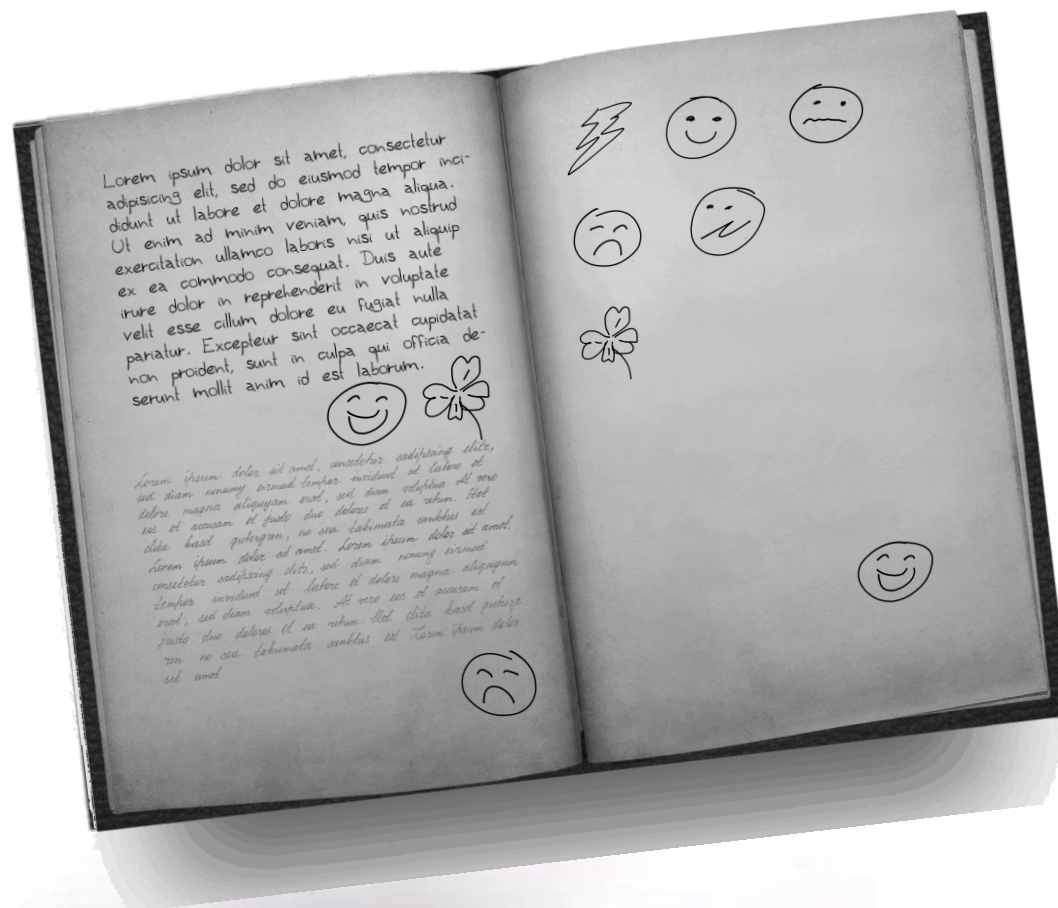
Personal assignments, rubrics and incremental feedback

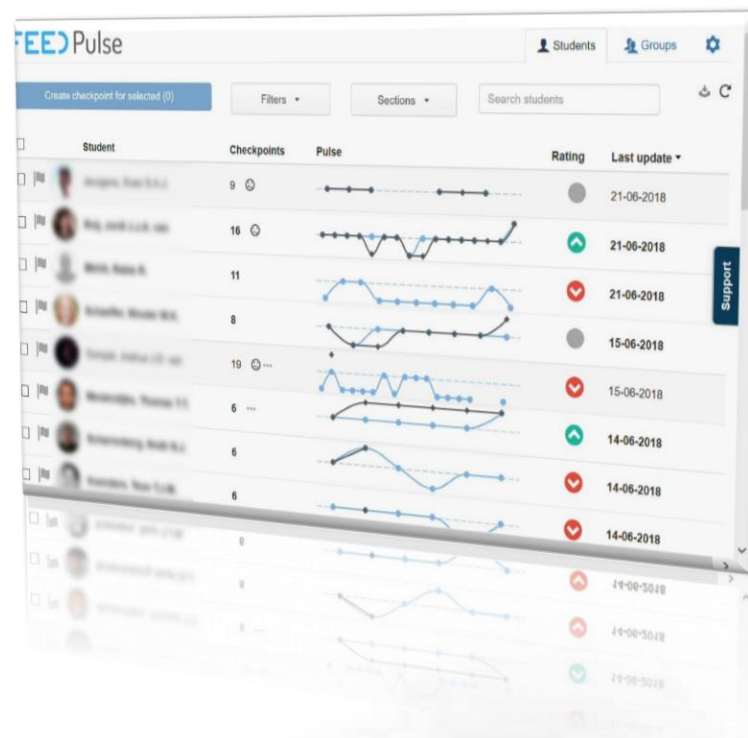




*Monitoring the **process***



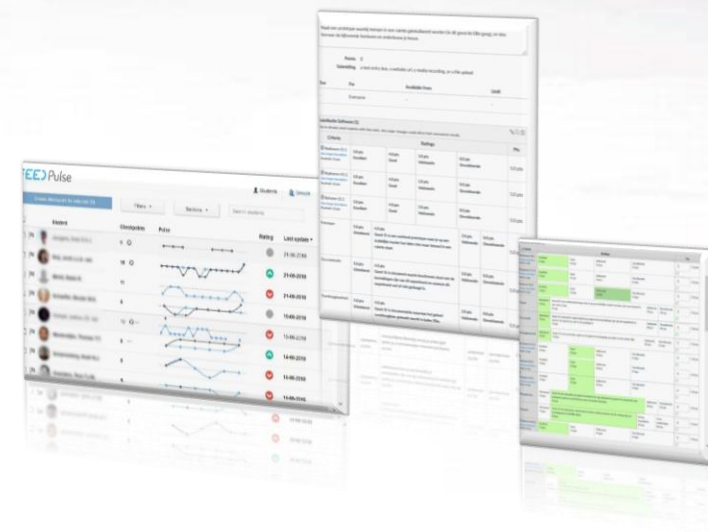




Monitoring the *process*



Competence profiling



***Audit trail** of all interventions, feedback and grading for every student*



Closing remarks



*Don't let tools **hack** your education.
Start with an educational **vision**!*



Closing remarks





Closing remarks







What's next for 2019?

- *Extreme analytics*
- *Micro credentialing (badging)*
- *Incubator graduation*
- *The Hub*
- *New building (no classrooms)*
-





Some extra information (*Youtube* links)

- [K.A.L. approach](#)
- *Fontys Hogeschool ICT* [open innovation](#)
- [Open innovation explained](#) *for students*
- [Open innovation choice](#)
- [Competence framework](#) *explained for students*
- *Eric Slaats TED talk about* [talent driven education](#)
- *Instructure view on* [open and Fontys Hogeschool ICT](#)



URL: www.i-cop.nl/links